

Double Throttle check valve NW 10 to 65

for water and oil
max. 320 bar
for flange connection

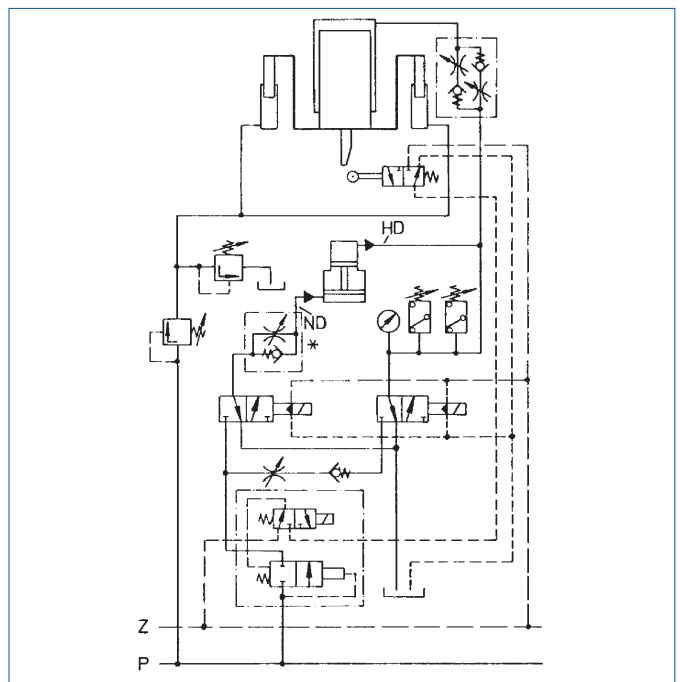
Double throttle check valves in the series DRVK 2/10-65 are a combination comprising two throttles with throttle pinions and two check valves in a cone seat design. They were specially developed for water hydraulics. Using these double throttle check valves a fluid flow can be continuously controlled from A to B by means of throttle 1, and in the opposite direction from B to A by means of throttle 2 - in accordance with the symbol attached. The flow rate depends on the differential pressure and viscosity. The construction type of the throttles provides for a possible blocking in both flow directions. The throttles as well as the check valves are sealed by pressing two metal cones against one another. The opening stroke of the check valve cones is provided with an end position damping and dimensioned such that when the return flow starts a fast closure of the check valves is assured. The opening pressure of the check valves is 1 bar. The max. working pressure must not exceed 320 bar.

Special features:

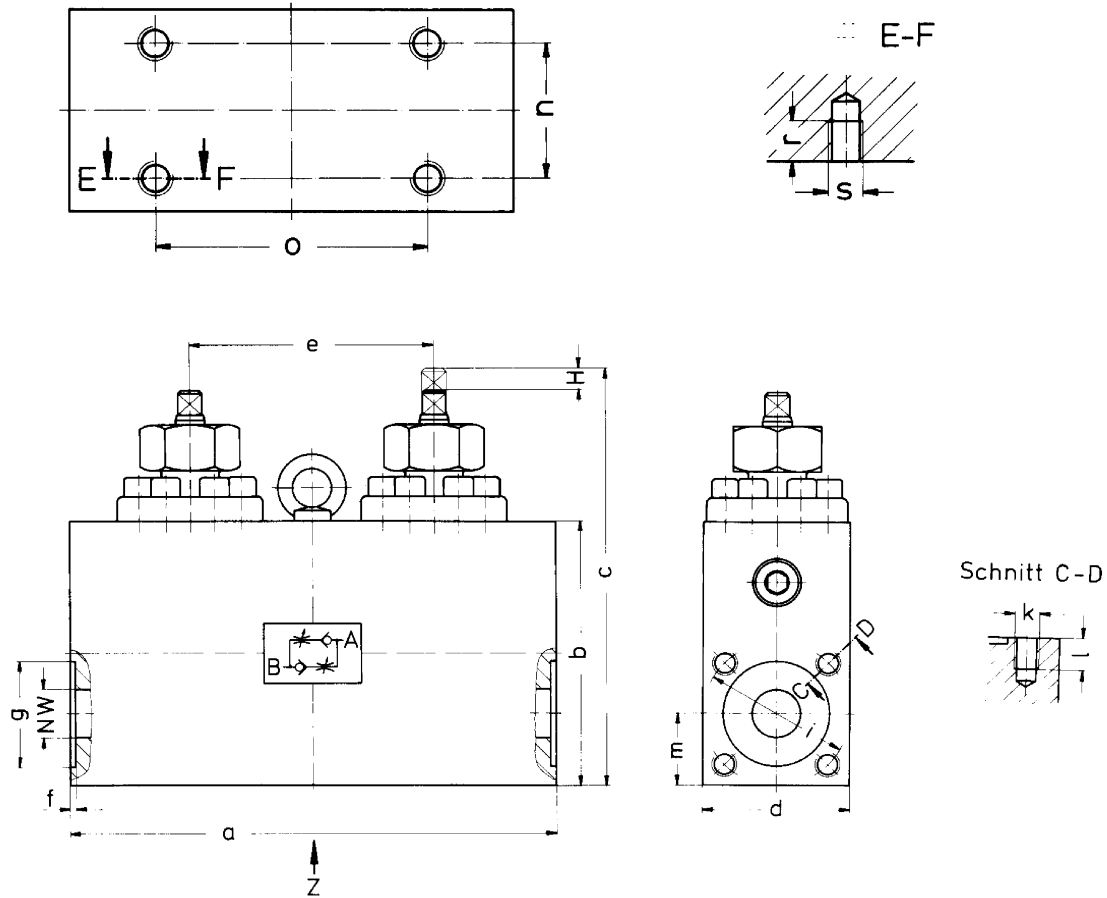
The adjustable throttles can be adjusted under pressure. They are secured against auto-turning by means of locknuts. Throttles and throttle seats are easy to replace. The valve cones of the check valves as well as the closing springs are fitted in an extremely flow-promoting fitted cartridges. A double guide for the valve cones provides for a perfect seal on the valve seat. The closing springs are chambered such that medium cannot flow through the same.

Thus, in the event of any spring fracture occurring it is impossible for debris to enter into the circuit. Double throttle check valves of this type are almost insensitive with regard to the high flow speeds occurring in hydraulic press water systems. All wear parts are made of corrosion resistant materials, are easy to access and fast to replace. The mounting position can be freely chosen.

Mounting example:



* Throttle check valve



| | NW | A | B | H | a | b | c | d | e | f | g | i | k | l | m | n | o | r | s |
|--------------|----|-------------|-------------|----|-----|-----|-----|-----|-----|---|-------|-----|-----|----|----|-----|-----|----|-----|
| 10/DRVK2/315 | 10 | FA10 ATI | FA10 ATI | 10 | 140 | 75 | 134 | 50 | 60 | 2 | ∅ 28 | 44 | M10 | 18 | 25 | 32 | 60 | 10 | M 8 |
| 15/DRVK2/315 | 15 | FA15 ATI | FA15 ATI | 12 | 190 | 95 | 153 | 60 | 90 | 2 | ∅ 38 | 54 | M10 | 18 | 30 | 40 | 130 | 14 | M 8 |
| 25/DRVK2/315 | 25 | FA25 ATI | FA25 ATI | 13 | 230 | 125 | 208 | 80 | 120 | 2 | ∅ 55 | 72 | M12 | 20 | 40 | 50 | 160 | 14 | M10 |
| 32/DRVK2/315 | 32 | FA32 ATI | FA32 ATI | 20 | 260 | 145 | 243 | 90 | 140 | 2 | ∅ 60 | 80 | M16 | 22 | 45 | 60 | 170 | 18 | M12 |
| 40/DRVK2/315 | 40 | FA40 ATI | FA40 ATI | 22 | 280 | 165 | 273 | 100 | 140 | 2 | ∅ 76 | 98 | M16 | 22 | 50 | 70 | 200 | 18 | M12 |
| 50/DRVK2/315 | 50 | FA50 ATI | FA50 ATI | 30 | 390 | 210 | 340 | 120 | 210 | 2 | ∅ 92 | 118 | M20 | 23 | 60 | 80 | 290 | 20 | M16 |
| 65/DRVK2/315 | 65 | FA65 ATI | FA65 ATI | 38 | 470 | 250 | 403 | 150 | 270 | 2 | ∅ 110 | 145 | M24 | 25 | 75 | 110 | 340 | 25 | M20 |